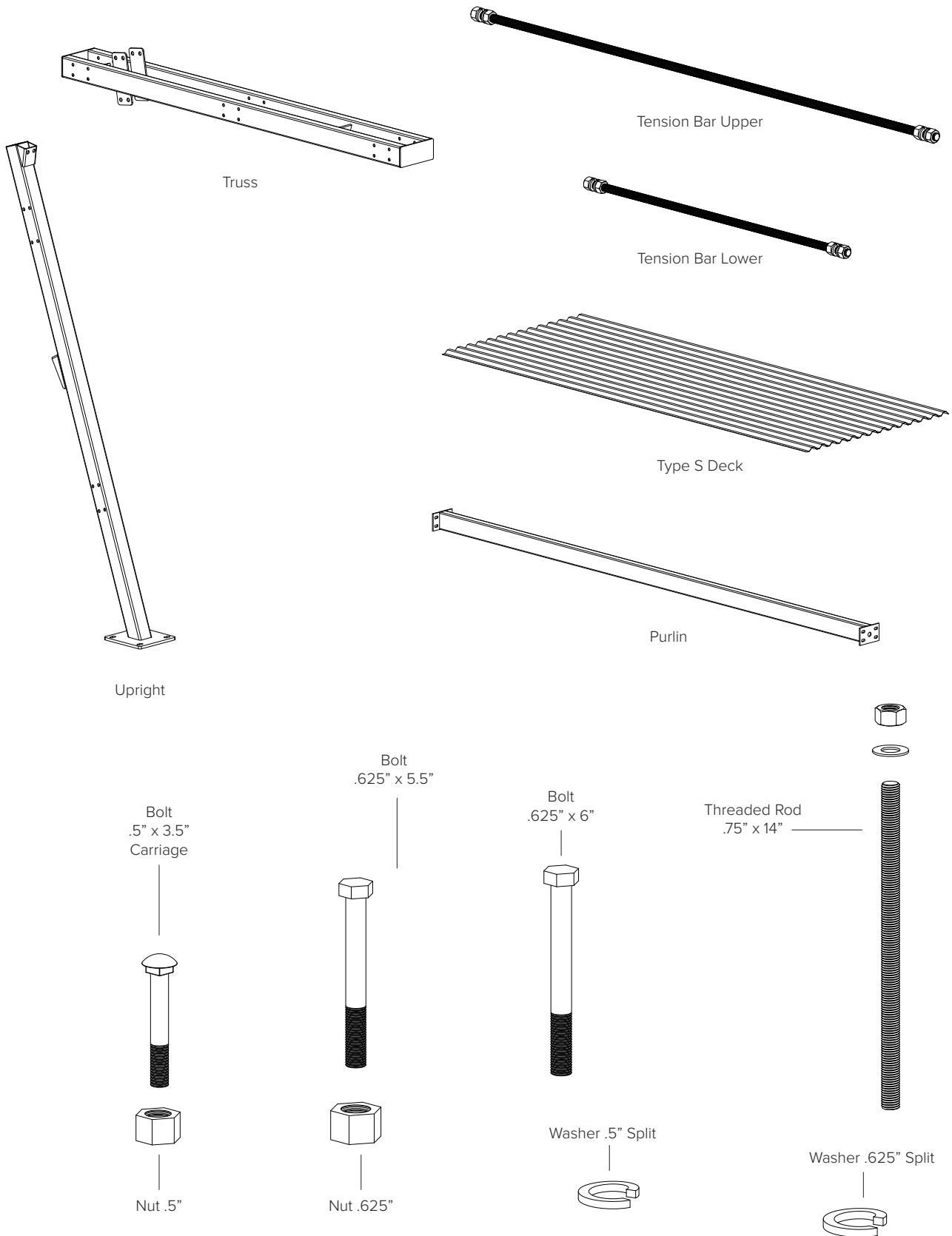




DERO
A PLAYCORE Company

Vizor® Shelter

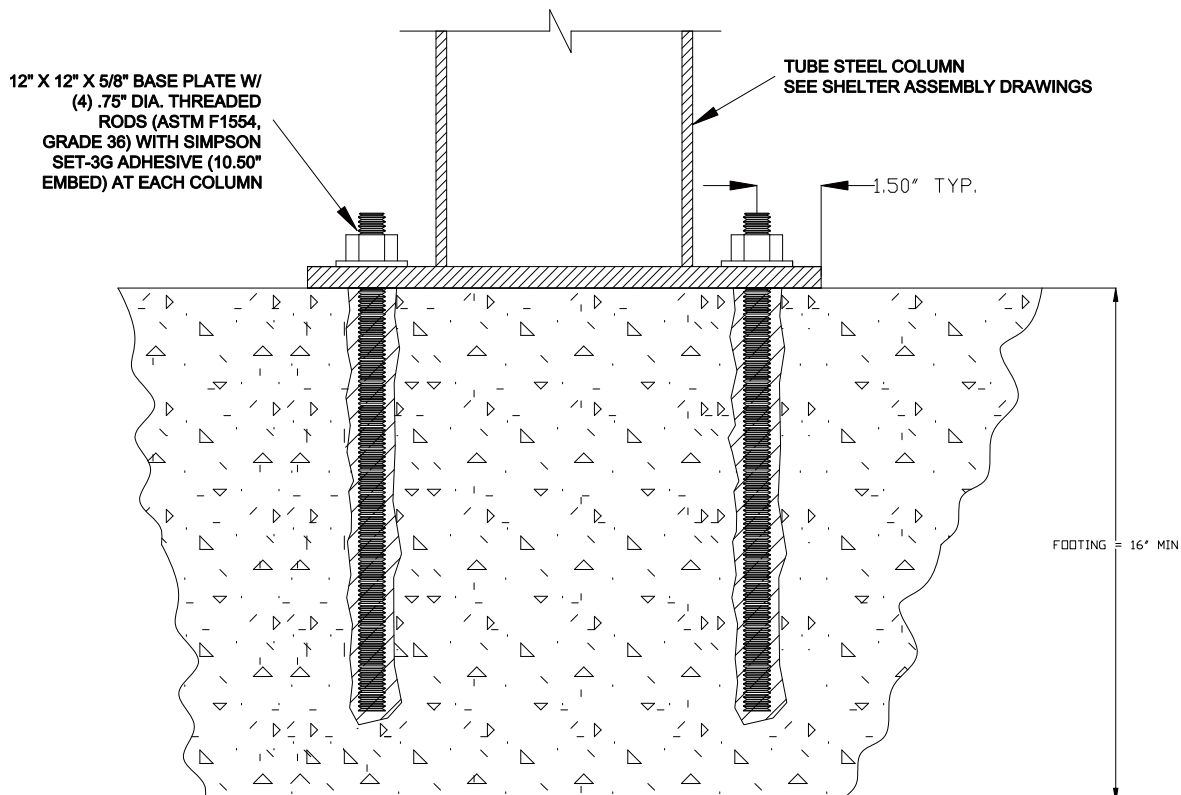
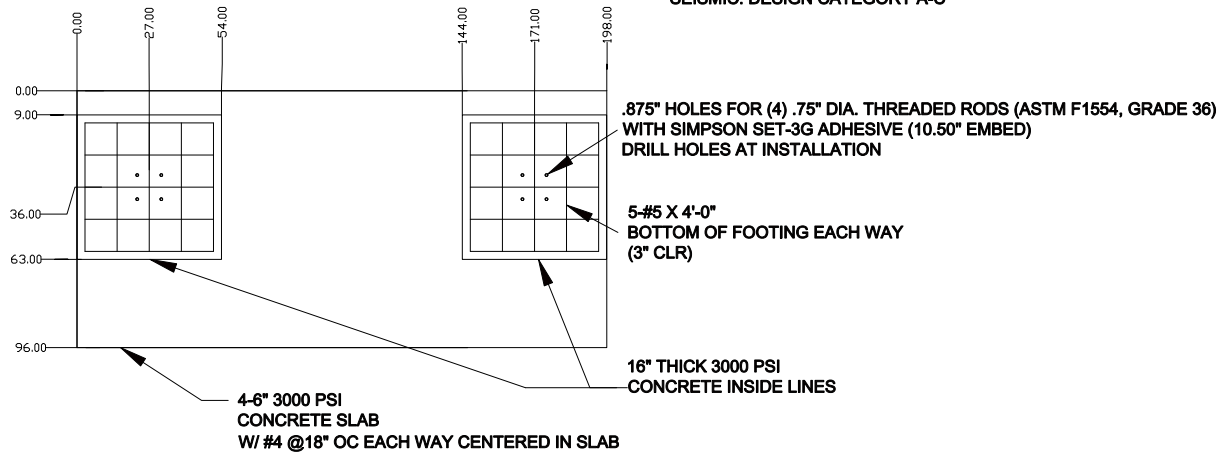
Parts List





GENERAL STRUCTURAL NOTES:

1. FOOTING CONCRETE STRENGTH = 3000 PSI
 2. REBAR STRENGTH = 60 KSI (ASTM A615, GRADE 60)
 3. THREADED RODS = 36 KSI (ASTM F1554, GRADE 36)
 4. ADHESIVE = SIMPSON SET 3G. NOTE THAT SPECIAL INSPECTION OF BOLT INSTALLATION IS REQUIRED PER IBC 2015.
 5. FOOTING SHALL BE PLACED ON WELL COMPACTED AND FREE DRAINING SOIL.
 6. DESIGN PER IBC 2015, RISK CATEGORY 1
- SNOW: 60 PSF GROUND SNOW
WIND: 105 MPH, EXP. B
SEISMIC: DESIGN CATEGORY A-C





DERO
A PLAYCORE Company

Vizor® Shelter

Installation

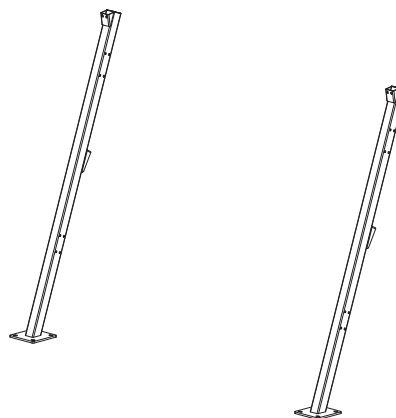
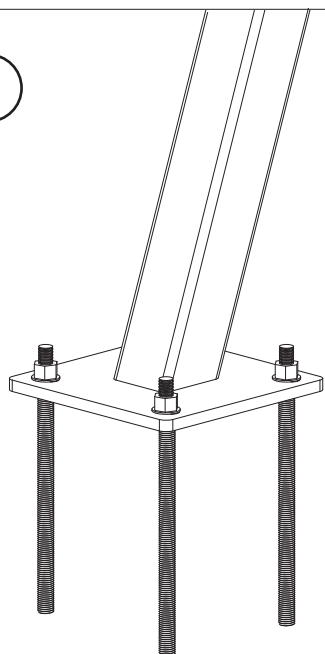


TOOLS NEEDED

Tape Measure
Marker or chalk
Level
Sledge Hammer
Rubber Mallet
Large Hammer Drill
Standard Drill
3/8" Socket with drill attachment

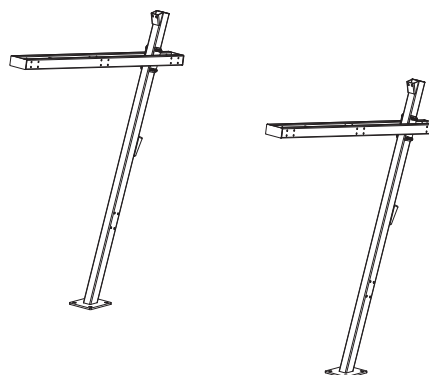
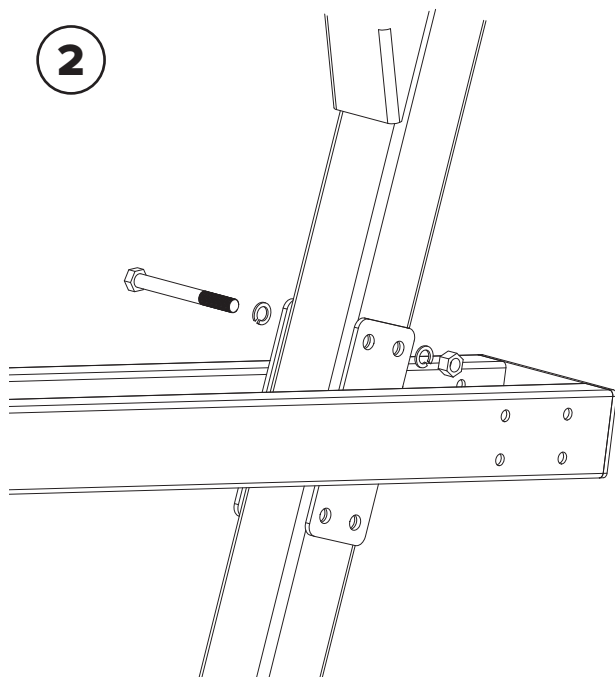
7/8" Diameter Masonry Bit
5/8" Diameter Masonry Bit
3/4" Wrench/Socket
15/16" Wrench/Socket (2)
1 1/8" Wrench/Socket
1 1/4" Wrench
Spud Wrench

1



Place Uprights based on footing diagram and drill (4) 7/8" diameter holes in concrete 12" deep for each Upright. Arrange special inspection of anchor holes and anchor/epoxy installation per IBC 2012. Consult Simpson Set 3G epoxy instructions for further detail. After inspection and sufficient epoxy cure time, the Uprights may be placed over the threaded rod and secured with washers and nuts finger-tight.

2



Lift Truss over the Upright and secure with (4) 5/8" x 6" bolts, (8) 5/8" lock washers, and (4) 5/8" nuts.

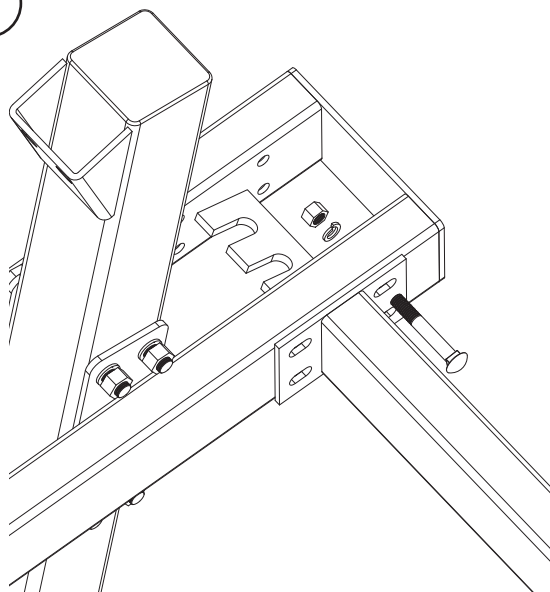


DERO
A PLAYCORE Company

Vizor® Shelter

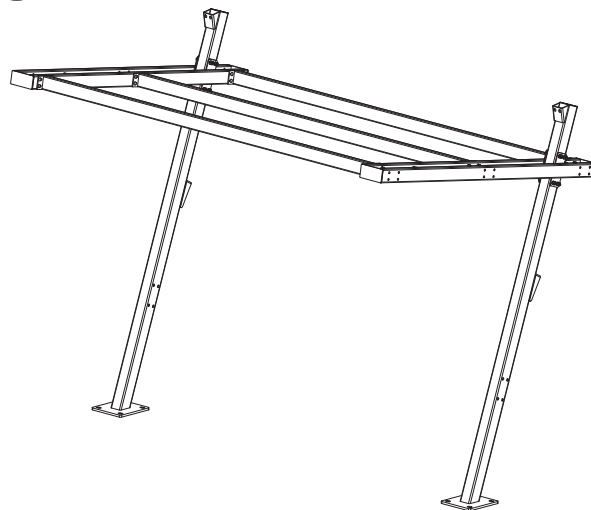
Installation

3



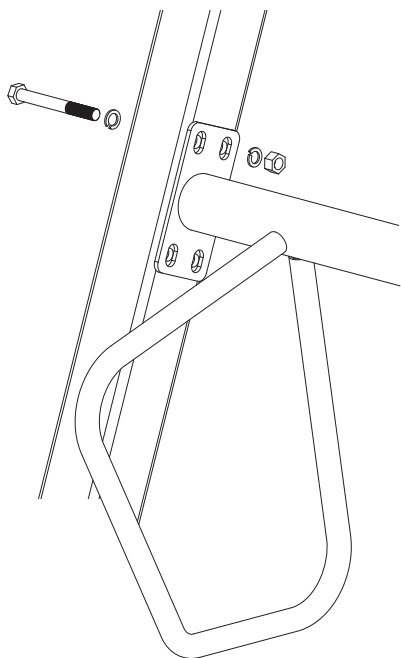
Place the first Truss and secure with (4) 1/2" x 3.5" carriage bolts, (4) 1/2" lock washers, and (4) 1/2" nuts on both sides.

4



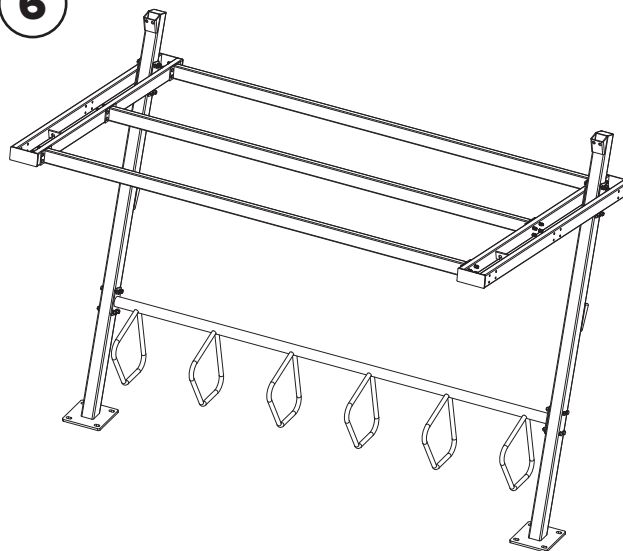
Continue securing the remaining Purlins. Leave nuts finger-tight if a Campus Rack will be added. Tighten if no Campus Rack will be added.

5



If using a Campus Rack, secure with (4) 5/8" x 5.5" bolts, (8) 5/8" lock washers, and (4) 5/8" nuts on both sides.

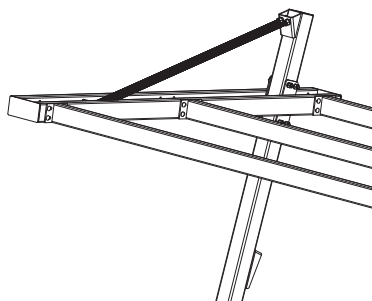
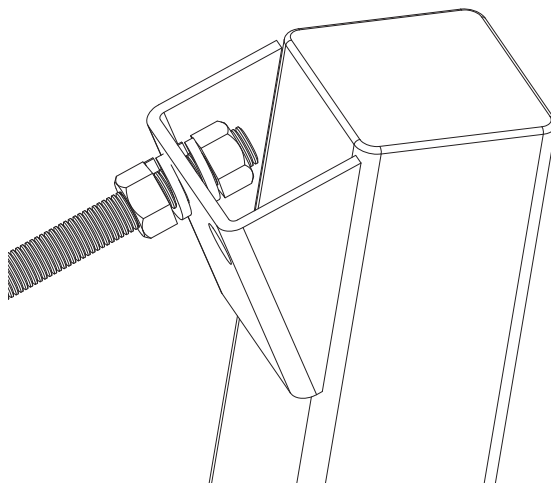
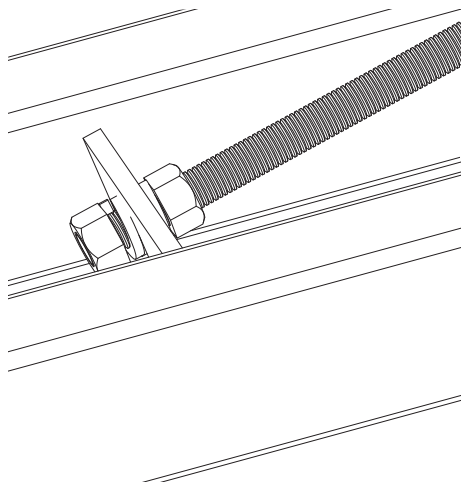
6



Completely tighten truss bolts and Campus Rack bolts if applicable. Completely tighten anchors to 240 ft-lbs.

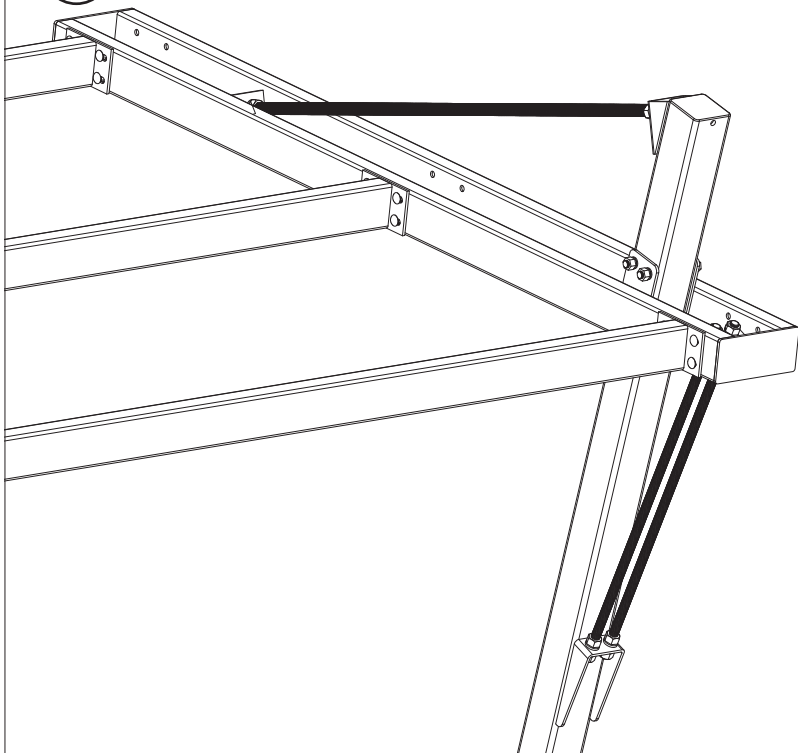


7



Secure the upper Tension Bars with (4) 3/4" nuts and (4) 3/4" lock washers each.

8



Secure the lower Tension Bars with (4) 3/4" nuts and (4) 3/4" lock washers each.

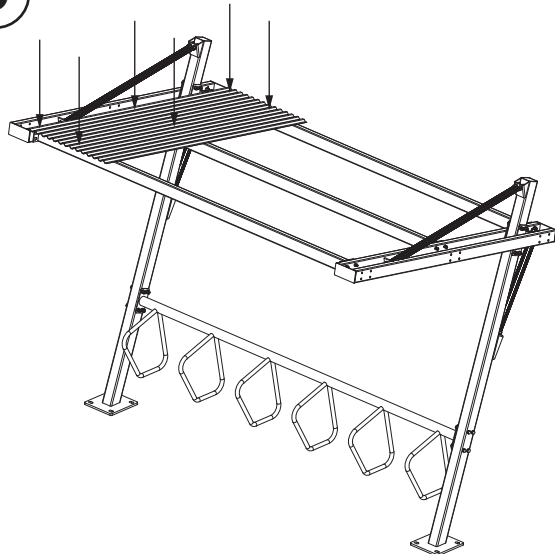


DERO
A PLAYCORE Company

Vizor® Shelter

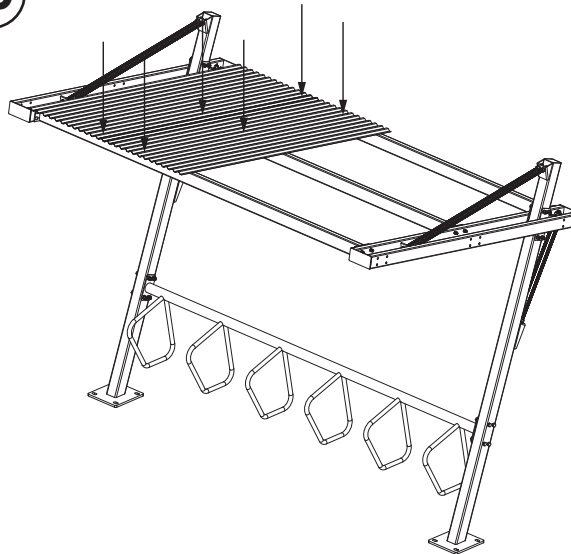
Installation

9



Place the first section of Type S Deck and secure with (6) self-drilling screws.

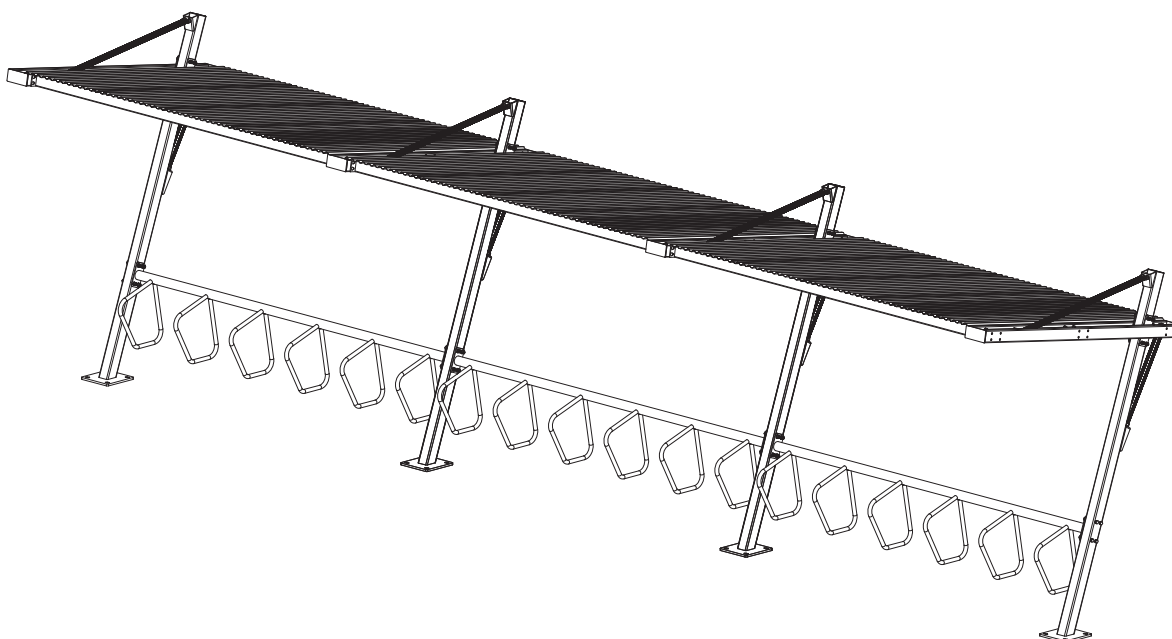
10



Place the next section of Type S Deck and secure with (6) self-drilling screws. The first (3) self-drilling screws will go through both Type S Deck sections.

Continue securing the remaining (3) Type S Deck sections.

11



If building a modular run of shelters, continue adding shelters until complete.